



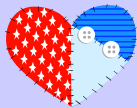
Plain Print

Volume 33, Number 9

May 2006

Inside this Issue

May Speaker	1
Quilters' Day Out	1
Memberships are Due	1
President's Message	2
A Message from Cuddle Quilts	2
Cuddle Quilt size guide	2
Hearts and Hands Afternoon Workshop	2
Piecemakers	2
Evening Stars evening workshop	2
Next Newsletter Deadline	2
April 2006 Minutes	3
Bloomin' Quilts show news	4
Quilt Show Vendors' list	5
Quilt Show Auction donation form	5
The Quilt Index	5
Discover Nebraska	5
LQG Nickel Swap	6
Fall Retreat News	6
Treasurer's Report	6
The Astrology of Quilters	6
Keep your email current	6
Friendship Block	7
Advertisements	7 and 8
Officer listing	8



Lincoln Quilters Guild Quilting since 1973

Meeting the *second Monday*
of each month

September through May
(except December)

Gathering at 6:30 p.m.
Program & Meeting
at 7:00 p.m.

College View Seventh-Day
Adventist Church
4015 South 49th Street
Lincoln, Nebraska

On the Internet at
www.lincolnquiltersguild.org



Bonnie Kucera - Guest Speaker

"What Was I Thinking?"

Monday, May 8, 2006 7:00 pm

Bonnie has been quilting since 1985 and lives in Hickman, Nebraska. Appliqué and hand quilting are her favorite parts of quilting. Bonnie never follows a pattern. She will always change the pattern and put herself in it. Bonnie had a quilt juried into the American Quilter Society show in Paducah, Kentucky. Another quilt was juried into the International Quilt Association show in Houston, Texas.

Bonnie has been very active in the Nebraska State Quilt Guild and her local guilds. Her quilt stories will have you shaking your head in amazement!

Quilters' Day Out

When: **May 6, 2006**

Where: **First United Methodist Church**
50th and St. Paul, Lincoln, Nebraska

Time: **9:30am coffee, 10:am program**

"*Quilts Inspired by Nature*" presented by quilters inspired by Ruth McDowell, will be the morning program. A catered lunch will be followed by two short presentations by the First Church Banner group and Susan Weber. The programs are free. Those wishing to register and attend the program only may call Jo Anne Bair at 488-0344 or email her at glb600@aol.com.

Lunch will be catered by *Tastefully Yours*. For your lunch reservation, send \$9.00 to Jo Anne Bair, 6000 Culwells Rd., Lincoln, NE 68516.



Annual Memberships are Due!!!

Renew your guild membership for 2006-2007 at the May 8th meeting. Otherwise you'll need to download a form from the LQG website, fill it out and mail it with your payment by JULY 1, 2006. If you do not renew by July 1, you will not be listed in the yearbook and will not receive a September newsletter.

A full year membership is \$25.00, first time members who join January or later, seniors and teens will pay \$15.00 membership dues. (See LQG November Meeting Minutes printed in the January Plain Print newsletter.)

Please make checks payable to "Lincoln Quilters' Guild".

If you miss the May 8th meeting, mail your form and payment to:

Mary Werner, Membership Chair
P.O. Box 6861
Lincoln, NE 68506

If you have any questions, you may call her at 730-6334

**Become a
Member!**

Lincoln Quilters' Guild

OFFICIAL PUBLICATION
OF THE
LINCOLN QUILTERS GUILD
LINCOLN, NEBRASKA

Published nine months of the year:
Summer, September, October,
November, January, February, March,
April, and May.

Editor and Layout:

Lin Gowin-O'Brien

Circulation: Carol Curtis

The deadline to submit articles and
ads for inclusion in the *Plain Print* is
the Wednesday following the Guild
meeting.

**Next September
newsletter deadline:
August 16**

ADVERTISING

Business Ad Rates:

A 3 1/2 " x 2" sized ad is \$20 for the
first month and \$15 per month for
subsequent months.

A 3 1/2 " x 4" sized ad is \$35 for the
first month and \$30 per month for
subsequent months.

Ads must be camera-ready.

Classified Ad Rates:

Any individual may place a classified
quilt-related ad in the "Quilters'
Exchange" at a cost of \$5.00 for 30
words. Send exact text for ads.
Send articles and ads with payment
(payable to "Lincoln Quilters Guild")
to:

Lin Gowin-O'Brien
642 S. 28th Street
Lincoln, NE 68510
Telephone: (402) 477-6545
Email: Linobrien@netscape.net

President's Message



Seem's like yesterday I hit the gavel after being installed as guild president. The year has flown by. It's hard to believe I'm already writing my *last* newsletter column. I want to take this opportunity to thank all those of you who helped along the way – officers, committee chairs and all of you who offered advice or words of encouragement. Thank you all for a most enjoyable year.

I joined LQG to become a better quilter. But I've gotten so much more than that – fun times, good memories and many dear friends. And I thank you.

Linda Loker

LQG President 2005-2006

Cuddle Quilt Size Guide

Ever wanted to help with cuddle quilts but didn't know what size to make it? We're repeating this information that was printed in the January 2006 *Plain Print Newsletter*. Thanks to Jean Baker who originally supplied these measurements.

Listed below are the size of squares and the count of how many are used for both Cuddle and Twin size Quilts.

CUDDLE QUILT SIZE				
Size of Square	Number of Rows	Number per Row	Total Number	Quilt Size
2.5"	22	26	572	44 x 52"
3"	18	22	396	45 x 54"
3.5"	15	18	270	45 x 54"
4"	12	15	180	42 x 52.5"
4.5"	11	13	143	44 x 52"
5"	10	12	120	45 x 54"
6"	8	10	80	44 x 55"

TWIN QUILT SIZE				
Size of Square	Number of Rows	Number per Row	Total Number	Quilt Size
6"	13	16	208	71.5 x 88"

*(a twin size is normally 72 x 84"
but this will vary by block size).*



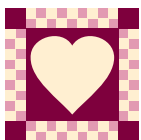
A Message from Cuddle Quilts

Thank you to all who donated fabric to update our supply for Cuddle Quilts. We will continue to have work days on the first Friday of June, July and August. Keep sewing!

When you finish a quilt it can either be dropped off at the resource room or give me a call at 580-6068 and I will be happy to arrange for a pick up.

Last year we gave out 169 quilts and this year we have given out 369. Wow!! Thank you so much.

Anita Ahrens



Hearts and Hands

Afternoon Workshop

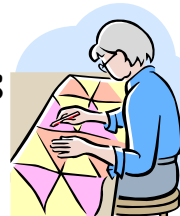
Come join us at our Afternoon Workshop that meets monthly (except in December). Bring a project to work on or just come and visit. We have "Show and Tell", question time, work on Cuddle Quilts and more.

**Christ Lutheran Church
Fellowship Hall
4325 Sumner Street
1:30 pm
4th Monday of the Month**

For more information call: Judy Edwards
489-7395 or Arlene Lynn 466-5148.

Piecemakers

A newer small group that meets monthly. All levels of quilters are welcomed.



Third Thursday of the month
at 1:00 in the afternoon

Rickrack Fabric Shop
14th and Pine Lake Road

Call *Willa Smith* for further information at 420-2422. Please leave a message and I will return your call. Or you can email me at rswd660@inebraska.com

Evening Stars



Evening Workshop —

Meets the 4th Monday of each month, at 6:30 pm at the Gere Public Library 45th and Normal Blvd. Because of library policy, no food is allowed.

During June, July and August this group also meets on the 2nd Monday at the same time and location.

For more information, contact Dana Atteberry at 474-1150.

Minutes of the Lincoln Quilters Guild – April 10, 2006

College View Seventh-Day Adventist Church – Lincoln, Nebraska

The April meeting of the Lincoln Quilters Guild was called to order at 7:00 PM by President Linda Loker.

Vice President Linda Gapp introduced the evening's speaker, Lynn Witzenburg of Des Moines, Iowa. Lynn provided a very entertaining and inspiring lecture and trunk show on "Choosing the Best Quilting Design".

The business meeting followed.

President Loker clarified *Robert's Rules* regarding voting on routine items. If there are no questions or discussion on things such as the minutes of previous meetings, these minutes can be approved without motion and vote.

Minutes of the March meeting were approved as printed in the Plain Print.

Treasurer's report as printed in the *Plain Print* generated no questions and was filed as printed. The 2006-2007 budget as presented at the March meeting also met with no questions or discussion. The 2006-2007 budget was unanimously approved as presented by voice vote.

Announcements – Kate Laucomer. Refreshment committee for this evening's meeting was Sharlee Green, chair, Sandra Anderson, Rosalind Carr, Pat King, Betty Newhouse, Irene Newhouse, Kimberly Shelley and Connie Strope.

All current committee chairs are asked to return their committee folders to Kate Laucomer with all updates included at the May meeting.

Soldier Blocks – We collected and shipped about 800 quilt blocks, enough for more than 22 quilts. Additional blocks may be given to Cindy Weyers, Diana Dreith or Kate Laucomer.

Soldier Care Boxes – A container is available for the collection of money to send care packages to LQG family members serving in Iraq. If you would like to contribute, someone will be in the back hall with the container after the meeting.

Sign up sheets are circulating for refreshments and 'holders and folders' for next Guild year. Please consider volunteering for these tasks!

Ayars & Ayers, Inc., a local construction company would like to hire someone to make a memory quilt out of project t-

shirts. More information is available on the bulletin board.

Plainsman Museum has a quilt exhibit planned for May 1-31, 2006 featuring German heritage quilts. More information on bulletin board.

Siouxland Sewing Guild is featuring Jenny Raymond on April 29, 2006. More information available on the bulletin board.

NEW BUSINESS

A. Scholarship Committee -- Rose Kastl announced the awarding of a \$150 scholarship to Nao Nomura who is doing a AQSG paper on Fiber Microscopy and a \$350 scholarship to Janet Price who is doing research on Grace Snyder and her quilts.

OLD BUSINESS

A. Members are reminded that membership renewals are being collected at April and May guild meetings. Membership dues are \$25/year or \$15/year for seniors and students.

B. The slate of officers for the 2006-2007 Guild year was introduced. They include President – Kate Laucomer, President Elect – Judy Lane, Vice President – Becky Haynes, Vice President Elect – Cathie Miller, Treasurer – Danielle Hecker, Treasurer Elect – Kimberly Shelley, Secretary – Sharlee Green and Advisor – Linda Loker. There being no additional nominees from the floor, the vote was held. The slate as presented was elected unanimously.

COMMITTEE REPORTS

A. Bus Trip – Lora Yardley and Kathy Griffin. The bus will be leaving *Slumberland* parking lot at 5:00 AM on 4/22/06. There is still space available for 4 people.

B. Cuddle Quilts – Anita Ahrens. A huge 'thank you' to everyone who donated new fabrics for Cuddle quilts at the March Guild birthday party. Six large plastic tubs of fabric were donated! Also thanks to everyone who has worked on the quilts over the past year. Cuddle Quilts will continue to meet over the summer on the first Friday of the month in the Resource room.

C. Quilt Show Report – Sheila Green. Many volunteers are needed to have a successful show. Sign up board for

greeters, white gloves are available. Quilts for the show may be dropped off at the May meeting, other times and places will be in the May Plain Print. Everyone is encouraged to consider displaying a quilt in the show. Sheila displayed a set of dishes that have been donated for the auction by Sally Campbell. These dishes were the inspiration for the Grace Snyder 'Petit Point' quilt. 10% of the proceeds from the auction of these dishes will go to Habitat for Humanity; the other 90% will go toward the Guild's support of the Mary Gormley Reading Room at IQSC. Sheila also introduced Virginia Welty who has donated a family quilt to the auction. This quilt is hand embroidered and hand quilted and dates to the 1930s - 40s.

Garden Party Reception – JoAnne Bair. Thursday evening, June 8th for member and one guest. Admission is free. Hats are proper attire for a garden party.

Raffle Quilt – Shirley Chaffin. Sales going well; keep up the good work!

Artful Dwelling – Brenda Carlson. Reminder that deadline for turning in is the May Guild meeting.

Auction Quilts – Vicky Skuodas. Vicky shared the quilts she received this evening, about 55 pieces have been received but many more can be used. Everyone is encouraged to consider making a donation, will be able to take donations up to the start of the show in order to get them entered into the auction program.

Mini Quilt Raffle – Elizabeth Sterns and Joyce Donlan. Quilts donated by Dorothy Neill, Genie Sullivan and Pat King were won by Pam Wakeman, Donna Welte and Irene Culbertson respectively. Susan Russell-Johnson won a book donated by Sheila Warren. Tonight's receipts were \$79. People volunteering for May donations are LaDonna Pankoke, Jean Barney and Merna Phillips. One more quilt is needed for the May mini raffle, contact Joyce or Elizabeth if you can help out.

There being no further business, the meeting adjourned to show and tell.

Submitted by
Lorelee Novak
LQG Secretary

Lincoln Quiltfest 2006

June 9-11 9am-5pm

"Bloomin' Quilts"

at Lux Middle School

Invite your friends, neighbors, co-workers, everyone to our show! We're going to have a new look, thanks to Zita Schneider's floor plan. We're excited to see all the "Artful Dwelling" Art Quilts you're making! The Quiltfest Committee is hard at work on a "surprise" exhibit we're anxious to show you. The Hoffman Challenge quilts will include unique prize winning quilts from across the United States. It's not too late to sign up to work a shift. Your "working" nametag is your free admission to the show. The International Quilt Study Center is lending us the architectural model of their new building!

Merchant Mall is full! The list of merchants is included in this Plain Print. Kate Laucomer and Martha Lane

Free Demonstrations in the south foyer on Friday and Saturday at 1pm, 2pm, 3pm. Look for the listing in this Plain Print. *Cathie Miller and Anne Parrott*

Quilt Registration deadline is Monday, May 8. It takes a lot of quilts to make a great show. Please consider sharing your talents by displaying a quilt! Registration forms are available in the Plain Print, at the Guild meeting, or online at www.lincolnquiltersguild.org. All level of quilters are urged to exhibit. Please turn in your registration forms at the May Guild meeting or mail them to Lorelee Novak, 2510 Jameson N, Lincoln, NE, 68512.

"Artful Dwelling" entries are due at the May meeting. *Brenda Carlson*

The Garden Party" opening reception is *Thursday, June 9, 7pm-9pm*. You and a guest are invited to attend free of charge. Our "welcome" will start at 7:30pm. Enjoy refreshments, remarks by Gloria Smith (Hoffman Challenge) and Carolyn Ducey (IQSC) and see the quilts! We encourage ladies to wear garden hats! Sign up at the May meeting or call or email Jo Anne Bair to make your reservation 488-0344 or glb600@aol.com.

Raffle Quilt Tickets are selling great! So far, 2,275 tickets have been sold, with 2,725 yet to sell! If you have tickets that you have no plans on selling, would you please be so kind as to hand them back to me? For some of you, the ticket sales are bloomin', now that the drawing is so near. Perhaps we just need to reshuffle what we have! I'll be glad to be the taker and the regiver.

This will be my last Plain Print "cheer-leader" note until I can give you all the details — so I will "one-more-time" ask you to get them out of your sewing room, and into your purse, people are just waiting to win this lovely quilt! **The drawing for the raffle quilt is Sunday, June 11, 4pm.** *Shirley Chaffin*

Children's Activities Our Kid's Corner allows children to have a hand-on experience with textiles and color as they construct quilt blocks! Children may also go on a photo scavenger hunt in our quilt show. *Doni Boyd, Mary Werner, Sheila Green*

Food Service by Lolo's will be on-going. Plan to have dessert, sandwiches and drinks during the show!

Auction! Many thanks to all that have contributed to our Quiltfest Auction. So far, 57 items have been donated!

Newest additions include is a partial set of Salem "Victory" china donated by Sally Campbell. The pattern on these dishes (petit point basket) was adapted to a quilt pattern created by Grace Snyder, a member of the Nebraska State Quilt Guild Hall of Fame. The quilt, called "Petit Point Dishes" may be viewed at the museum of Nebraska History. Virginia Welty donated a family embroidered quilt made in the 1930's. 90% of the sale of these two items will go to the Mary Campbell Ghormley Reading Room at the new International Quilt Study Center. 10% of all auction proceeds will be donated to Habitat for Humanity! Keep working on your auction donations, and remember to include your label, a sleeve if necessary and your completed donation form. *Vicky Skuodas*

2006 Quilt Show Auction Chair
gs20937@alltel.net

Quilt drop off Times and Sites:

Monday, May 8 7pm at the LQG May meeting

Friday, June 2 5-7pm and

Saturday, June 3 11am-4pm at the homes of:

- Millie Fauquet, 3445 North 58
 - Janice Kirchoff, 6421 Rolling Hills Blvd.
 - Carroll Dischner, 8140 Hickory Lane (north of 80th & A)
- Wednesday, June 7, 9am-11am at Lux Middle School*

Quilt Pick Up will be Sunday, June 11, 6-7pm in the south foyer of Lux. *Kim, Pat and Dan Shelley*

Complete Quiltfest information at
www.LincolnQuiltersGuild.org

DEMONSTRATIONS: (free with show admission)

Friday, June 9

- 1:00 "Jackie Robinson's 3-D Blocks" by Marie Glenn, Heavenly Treasures, Pawnee City
- 2:00 "Fractured Stars" by Roxann O'Hare, Cosmic Cow, Lincoln
- 3:00 "String Quilting on Muslin Foundation" by Linda Thompson, Rickrack Fabric Shop, Lincoln

Saturday, June 10

- 1:00 "3-D Flowers" by Sheila Green and Bev Vogel
- 2:00 "Yoga for Quilters" by Daya Nelson, C.Y.T.
- 3:00 "Flying Geese" by Cathie Miller

Questions about anything? call Sheila Green, 483-0453 or Carolyn Meter, 489-7964

Address for Lux Middle School
7800 High Street • Lincoln, Nebraska

Bloomin' Quilts

Quilt Show Vendor List

Please take time to visit and support the vendors who will be displaying their quilting supplies at our quilt show

The Back Porch	Lincoln, Nebraska
Bernina Sewing Studio	Lincoln, Nebraska
Bloomin' Minds	Council Bluffs, Iowa
Cosmic Cow	Lincoln, Nebraska
Country Traditions	Fremont, Nebraska
Fabric Fairies	Auburn, Nebraska
Grandma's Quilts	Palmyra, Nebraska
Heavenly Treasures	Pawnee City, Nebraska
Joan Duggan Designs	Omaha, Nebraska
Material Girls	Grand Island, Nebraska
The Picket Fence	Aurora, Nebraska
The Quilted Kitty	Lincoln, Nebraska
Rickrack Fabrics	Lincoln, Nebraska

Bloomin' Quilts

Quilt Show

Auction donation form

I am asking all LQG members to make a small quilt for the quilt show auction in June 2006. We have very talented quilters in our Guild. Our goal is to have over 100 small quilts to offer to the public. I want this auction to surpass all of the past years.

Please start your special small quilt donation today and submit this form with it when completed!

Thanks! Vicky Skuodas (gs20937@alltel.net)
2006 Quilt Show Auction Chair

Name _____					
Address _____					
City, State, _____					
Phone _____					
Item Name _____					
Size _____				Item # _____	
MP	MA	MQ	HP	HA	HQ
Description _____					

On computer _____		In Catalog _____		Sent Thank You _____	

DISCOVER NEBRASKA



Discover Nebraska is an L Q G sponsored educational outreach program. We visit fourth grade classrooms, presenting a Quilting/Social Studies unit that enriches the curriculum for the study of Nebraska History and the history of quilt making.

Our 18 volunteers have visited 28 schools (with 85 classrooms) in Lincoln and the surrounding area. That's 1,850 fourth grade students that we've reached!!!! We have traveled over 1,000 miles and volunteered over 500 hours for this project!

Our website is www.DiscoverNebraska.org Ryan Carlson continues to manage our website. It's been a great help in scheduling schools and our volunteers. The website has had 12,225 "page views" which includes 2,942 "unique visitors" since August 2005. We're pleased that we have several new volunteers this year, including two men! Due to several requests for presentations in the Omaha area this year, we are conducting a training session for interested Omaha Quilt Guild members at an Omaha school.

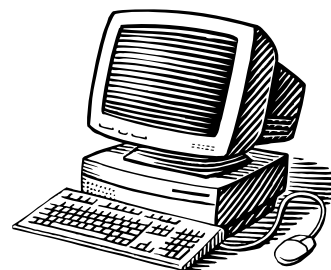
LQG Discover Nebraska volunteers are:

Lead Presenters: Sheila Green, Midge Reeder, Jean Ang, Dorothy Neill and June Reta.

Helpers: Brenda Carlson, Phyllis Horn, Lucile Lenz, Sharlee Green, Jack Chaffin, Ken Green, Sally Gowin, Linda Gapp, Connie Strobe, Sandy Anderson, Shirley Chaffin, Jan Gustafson and Carolyn Meter.

Sheila Green, Chairperson Discover Nebraska

The Quilt Index



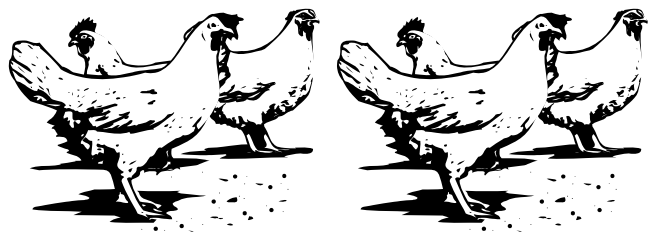
The Quilt Index is an online research and reference tool designed to provide unprecedented access to contextual information and images of quilts held in private and public collections.

This pilot Index presents quilts inventoried over the past 20 years by quilt documentation projects in Kentucky, Tennessee, Michigan and Illinois. More about collections The Quilt Index was conceived and developed by The Alliance for American Quilts in partnership with Michigan State University's MATRIX: The Center for Humane Arts and Letters Online and the Michigan State University Museum. The Index was supported in part by a major grant from the National Endowment for the Humanities. Check it out at <http://www.quiltindex.org/index.php>

LQG NICKEL SWAP

Thanks to all our participants and the committee in the nickel exchange this spring. We will begin again in September and exchange nickels as long as interest is high. See you then.

Submitted by Doni Boyd
nequilter@hotmail.com



Free Range Quilting Retreat

Don't be a chicken.... come to Fall retreat!

**Friday, October 20, 2006 (noon)
to Sunday, October 22, 2006 (3 pm)**

Lincoln is now hosting the retreat each year... with the help of our Omaha friends.

A SMALL daily project is planned...the rest of the time is for your own projects. There will be many "exchanges" in which you may choose to take part.

Name _____

Address _____

Phone _____

Email _____

Cabin mates _____

Upper or lower bunk _____

Chair Massage yes no

Send individual registrations or Groups may register together. Send ALL of your group's registrations, checks and SASEs together in one envelope.

ALL registrations must be postmarked **August 1, 2006 OR later**. Limit of 80 spots available. First come, first serve.

Cost \$85 per participant – make checks out to LQG
Send check and Self Address, Stamped Envelope to:
Martha Lane • 6121 S. 48th Street • Lincoln, NE 68516



LQG Treasurer's March 2006 Report

Beginning Checking Balance 3/1/2006 \$10,617.55

INCOME

Checking Interest	2.15
Mini Raffle Quilts	92.55
Misc Income <i>US Post Office Refund Bulk Acct</i>	507.70
Newsletter Advertisements	45.00
Quilt Show 2006 income	<u>204.00</u>

TOTAL INCOME **\$851.40**

EXPENSES

Meeting Room Rent	150.00
Newsletter printing and postage	206.51
Resource room rent	100.00
Programs & Classes	1,155.65
Scholarships	500.00
AQS membership fee	19.95
NQA membership fee	<u>20.00</u>

TOTAL EXPENSES **\$2,152.11**

OVERALL TOTAL FOR MONTH **(\$1,300.71)**

Ending Checking Account Balance 3/31/2006 9,316.84

Total CD's (*matures 4-29-06*) 3/31/2006 \$18,730.63

TOTAL ASSETS 3/31/2006 **\$28,047.47**

Peggy Clements

Treasurer 2005-2006

The Astrology of Quilters

(based on an article by Luana Rubin, *McCall's Quilting*, October 2004)

Taurus - April 20 - May 20

The Taurus quilter has a giant stash back home: not just gorgeous fabrics, but all kinds of beautiful objects and lovely collectibles that bring them pleasure by holding or looking at them.

These exquisitely made objects d'art and sensuous fabrics may come along to a class or conference simply for the pleasure of sharing their beauty with others.



Please keep your email address current with LQG

Send Kate Laucomer your email address if you wish to receive email notices on events during the summer months. No newsletter is published in June, July or August.

In September, we will be continuing to email and post the newsletter on our website for all editions.

Since FEBRUARY 2006, to save postage and printing cost, the Plain Print is only mailed to those who don't have email or wish to receive a printed copy. You can email Kate your address at: LincolnQuilters@aol.com or call her at 423-4611.

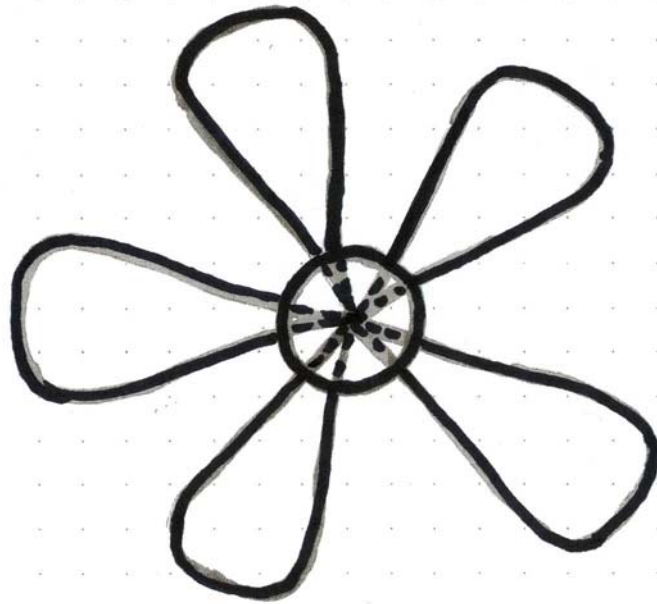
AGAIN, if you are a paid member and don't have an email address, notify Kate so she can have your mailing address.

May Friendship Garden Block

The 2005-06 Friendship blocks are all fusible appliqué on cut 6" square backgrounds. Designs are whimsical things found in a garden. You are given two designs each month, however, only one will be printed in the *Plain Print*. You can make either or both as many times as you wish.

Cut: 6" square for background. Trace pattern and fuse to background.

If you copy the patterns from the **Emailed Plain Print**, type "Ctrl P" (or on Macintosh computers type ⌘ P") which will bring up your PRINT MODE page. In the middle of that page is PAPER HANDLING, go to PAGE SCALING and select "NONE" in that box. This will allow you to print the pattern at 100%.



6 inches

CLASSIFIED ADS

Any individual may place a classified quilt-related ad in the "Quilters' Exchange" at a cost of \$5.00 for 30 words. Send exact text for ads. (For more information, see page 2 of this newsletter)

(PAID CLASSIFIED AD)
Travelin' Threads offering
 longarm machine quilting.
Lynn DeShon • 402-785-2382
 1995 N. 14th Street, Ceresco, NE 68017

(PAID CLASSIFIED AD)
Singer Featherweight FOR SALE
 Chris Taylor • 402-421-2912

(PAID CLASSIFIED AD)
BERNINA 160 FOR SALE
 38 quilting and decorative stitches, 3 alphabets, walking foot, florescent light, free hand system, programmable memory. \$650 OBO
 Sheila Green 483-0453 or
 sheilagreen@alltel.net
 for a complete list of features.

Professional Machine Quilting

By Gloria J. Smith

402-489-0062

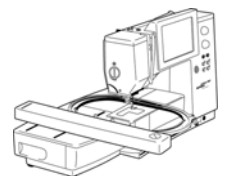
windyourbobbin@netzero.com



PAID ADVERTISEMENT

BERNINA Sewing Studio

- Bernina Sewing and Embroidery Machines and Sergers
- BSR-Bernina Stitch Regulator
- Horn Sewing Cabinets
- Machine Repair



Nothing Sews Like A Bernina. Nothing.
BERNINA

1501 Pine Lake, #12
 Lincoln, NE 68512
 402-423-3018

6800 "P" St.
 Inside Hancock Fabrics
 Lincoln, NE 68505
 402-464-0505

313 Court St
 Beatrice, NE 68310
 402-223-3108
 www.berninabuzz.com

PAID ADVERTISEMENT



Lincoln Quilters' Guild
P.O. Box 6861
Lincoln, NE 68506

2005 - 2006 LQG Officers

President	Linda Loker
President-Elect	Kate Laucomer
Vice-President	Linda Gapp
Vice-President Elect	Becky Haynes
Secretary	Lorelee Novak
Treasurer	Peggy Clements
Treasurer-Elect	Danielle Hecker
Adviser	Marilyn Rembolt

Have a Safe and Happy Summer!
Don't forget the Quilt Show June 9-11

Scissor Sharping

Shears Plus

Mike Marsh • Certified Sharpener

464-8339 / 560-1370

Scissors \$5.00
Pinking Shears \$6.00

PAID ADVERTISEMENT

Come to a Quilter's Retreat

At Alice's Little Blue House
Near Brock, Nebraska

A Charming Rural Setting in Southeast Nebraska

Available weekends or midweek

\$100 per person

Two nights and five meals provided

Group rates available for eight or more

Bed and bath linens provided • Washer and dryer on site
Pressing and cutting equipment • Embroidery machine
Computer and Internet access • Patterns, notions and scraps
Three nearby quilt shops in Syracuse and Auburn

Contact:

Kindred Spirits Retreat

62734 734 Road

Brock, Nebraska

(402) 264-4055 or (402) 297-4085

PAID ADVERTISEMENT

RICKRACK FABRIC SHOP

Come in and enjoy fun and unique fabrics.
Novelties, brights, retro, 30's reproductions,
batiks, books and patterns. Fabric for everyone.

HOURS: Monday-Friday 10-5:30 • Tuesday till 8:30 • Saturday 10-4:30

1501 Pine Lk. Rd. #13 Lincoln, NE 68512

402-423-7227

PAID ADVERTISEMENT