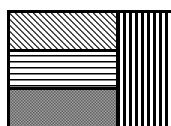
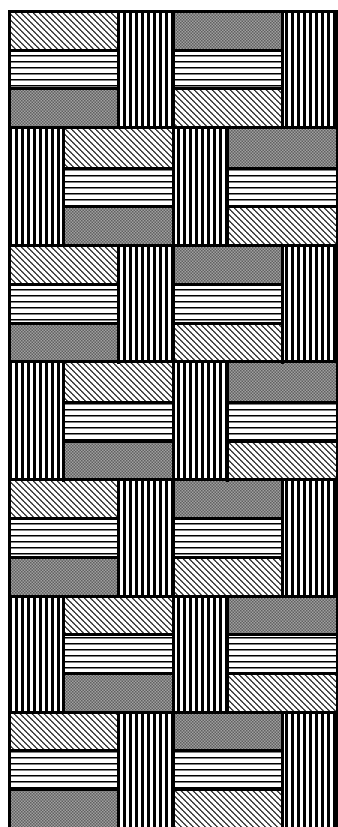


Cuddle Quilt Directions

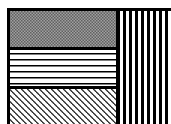
Use 7 strips of each of 4 fabrics, cut 2 1/2" wide. Make 1 fabric the primary.
Sew together 7 sets of the 3 colors that are **not** the primary fabric



Then cut 42 sections 6 1/2" long out of these strip sets
To 21 strip sets, add the primary fabric to one end, (Section A)
and for the other 21, add the primary fabric to the other end (Section B)



Section A



Section B

6 1/2" x 8 1/2"
each section

finishes to 6" x 8"

Cuddle Quilt should be 7 sections wide by 6 sections long.
Approx size: 42" x 48"